



**ADVANCED MATERIAL & COMPONENTS  
FOR BUS BODY BUILDING INDUSTRY**

[www.mfabtech.com](http://www.mfabtech.com)



### About us

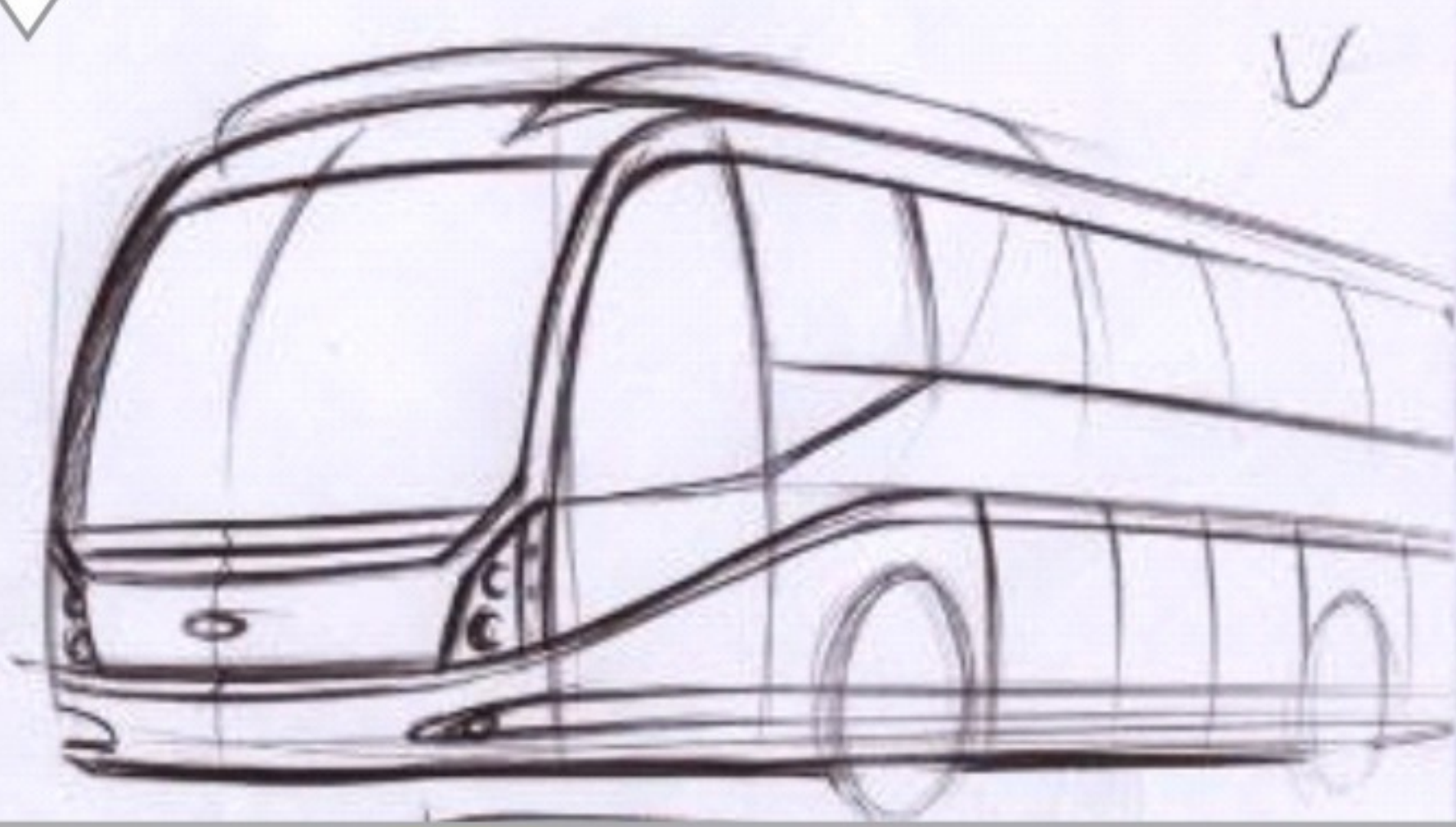
Mfab, incorporated in 2012 has been a preferred partner to supply the need of tubular structure straight & bend components and assemblies for the Bus Body Building industry in India and abroad with consistent product quality and cost advantage.

With the state of the art machinaries, skilled manpower and Quality Management systems in place, Mfab has successfully developed complex components that meets the technical standards of OEMs which were imported earlier. Mfab has proven that DEVELOP AND MAKE AT MFAB is a reality.

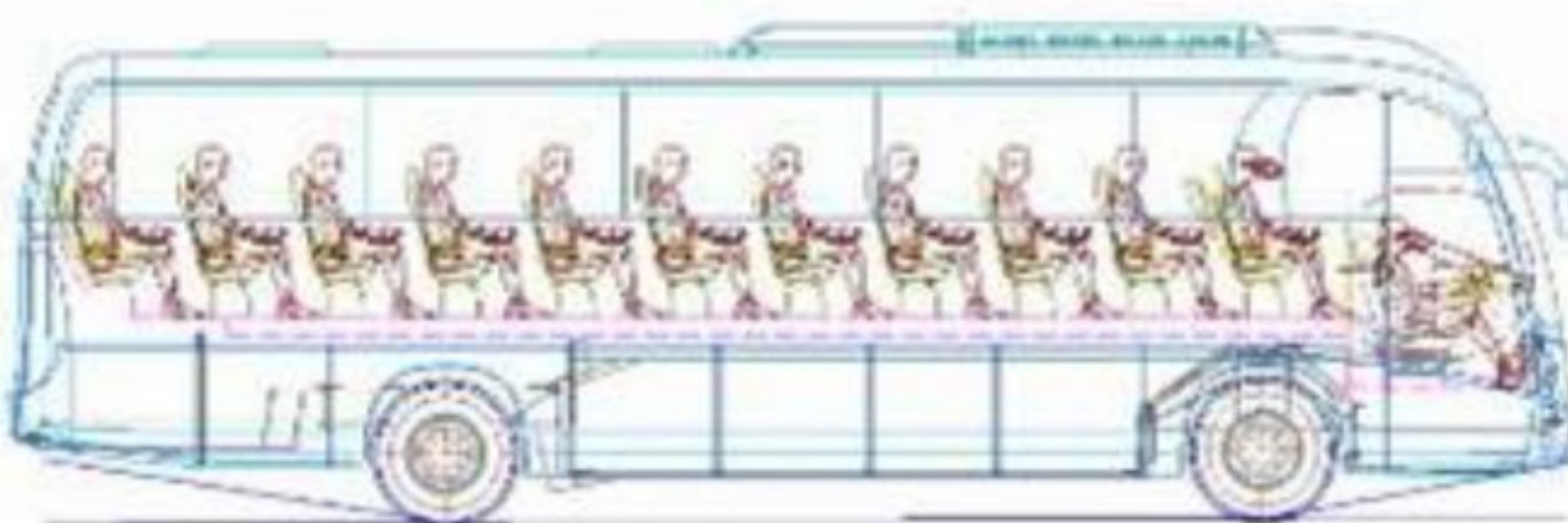
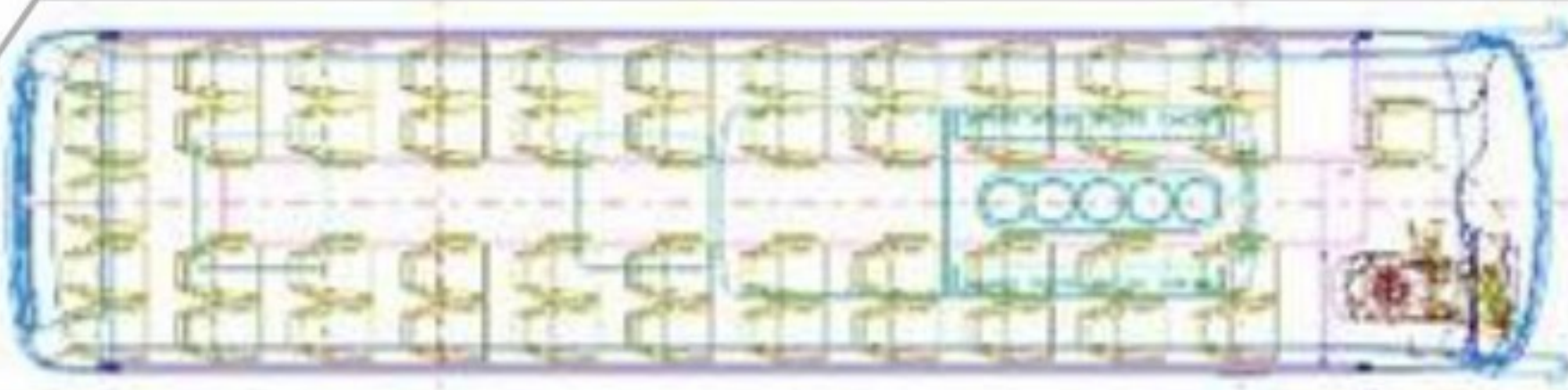




## CONCEPT STYLE DESIGN



## PACKAGE ENGINEERING

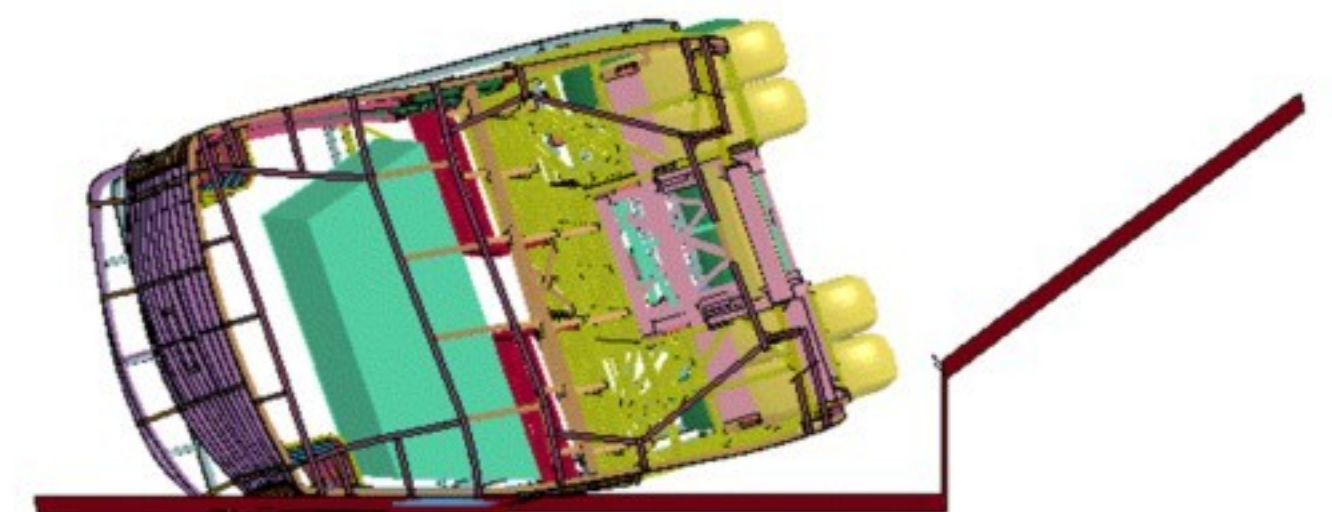
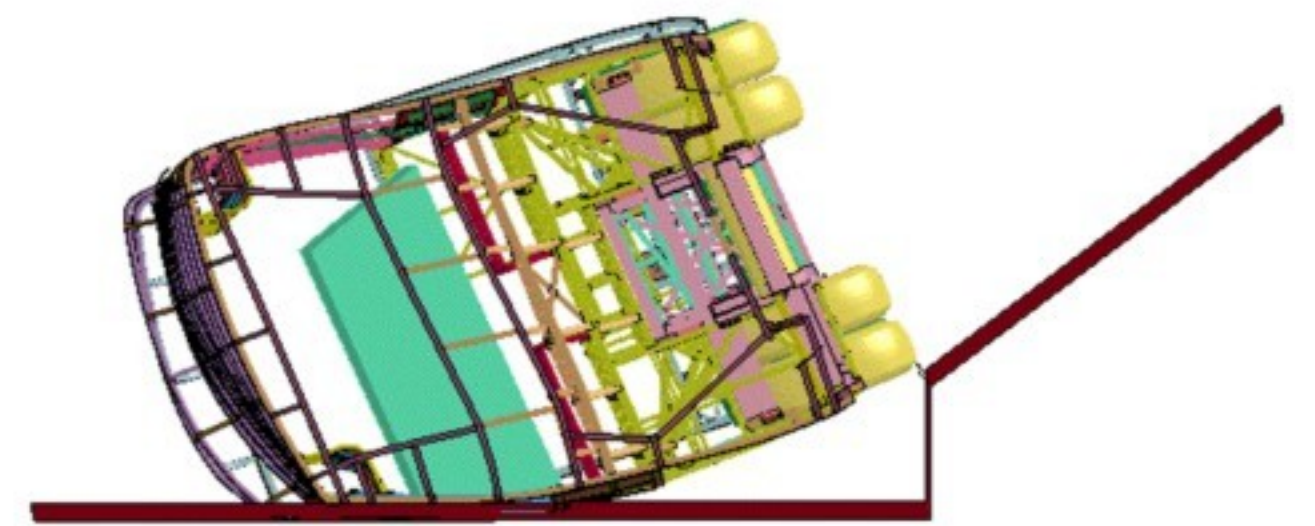
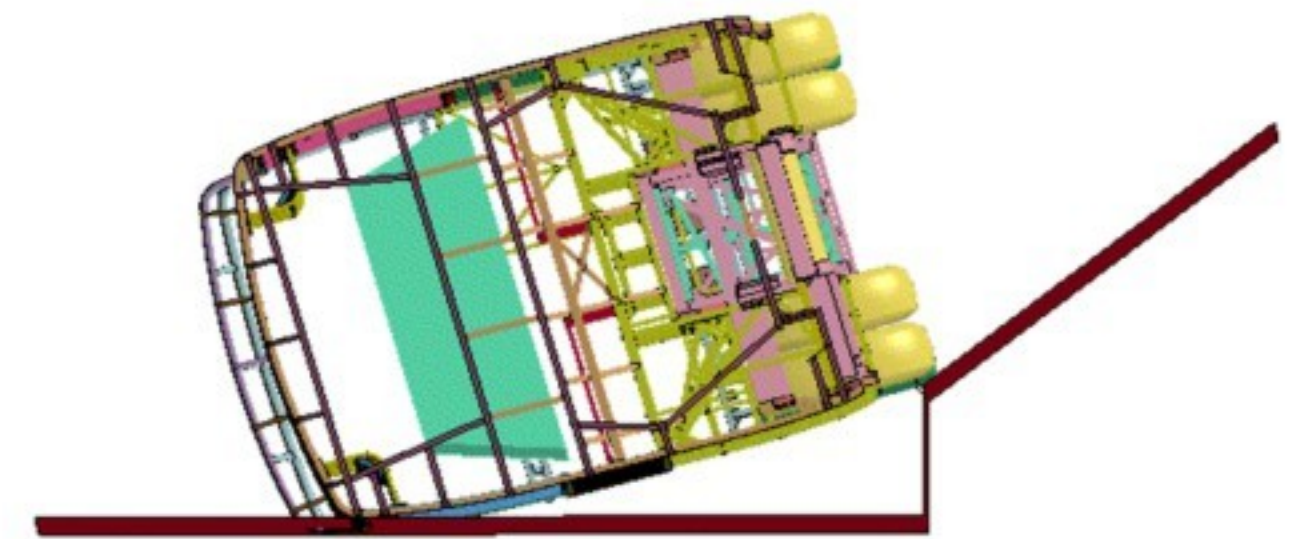
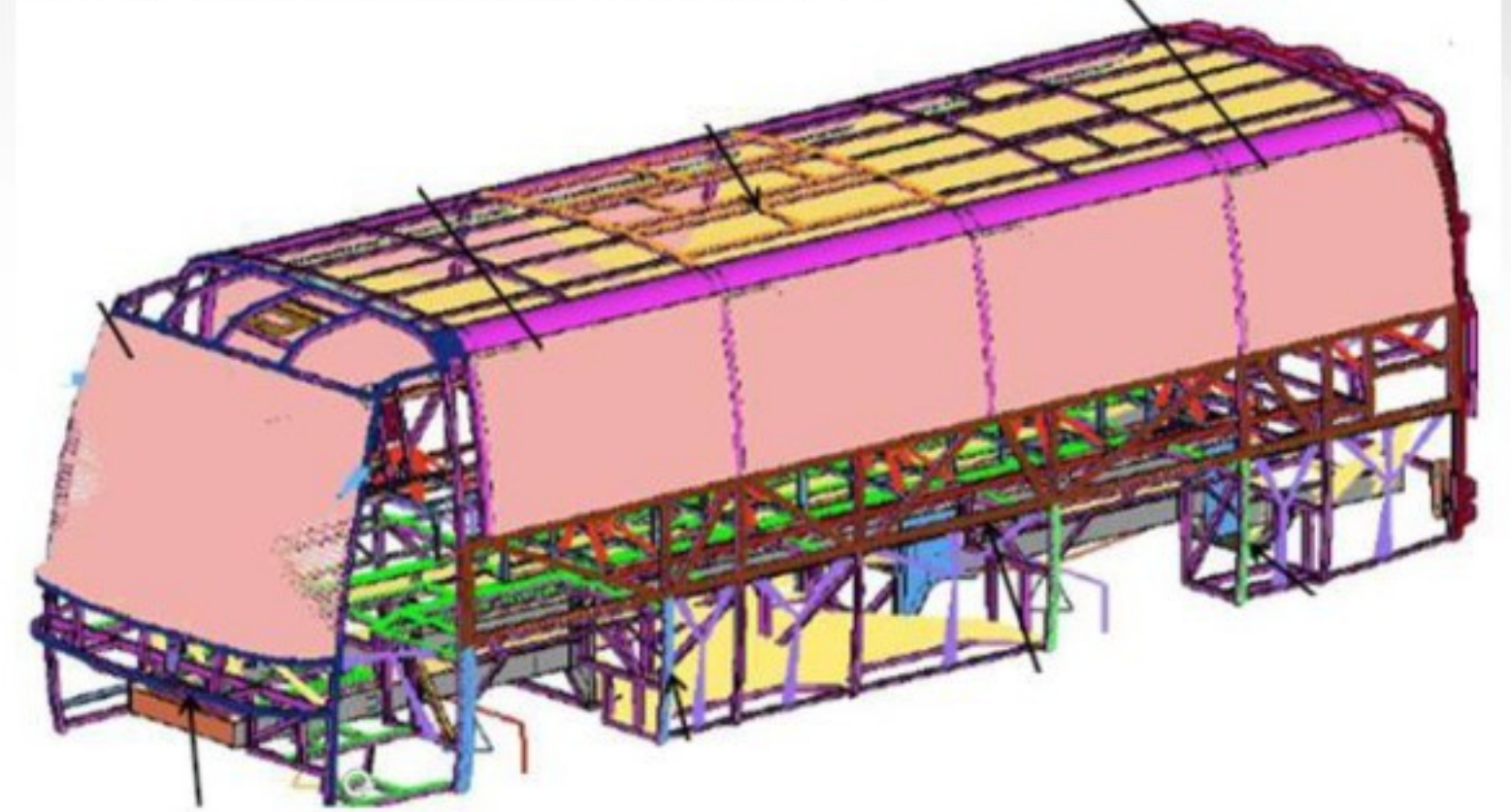


## SCALED PROTO



Safety, less pollution and vehicle efficiency has been the key motto of premier institution like Automotive Research Association of India ( ARAI ). Needless to say that every aspect of concept, design prototype, and manufacturing of an automotive has to be engineered to meet the minimum standard for the cause of human kind.

## ROLLOVER & FALLOVER VALIDATION



We and our partners worldwide are engaged in continuous research and development to cater the automotive OEMs and its ancillaries with the best of the products and services. Meeting the Global standard regulation related to Bus code has established a wide scope of improvements in areas like Concept Style Design, Package Engineering, Structure designing & validation, Manufacturing feasibility and Manufacturing process improvement.

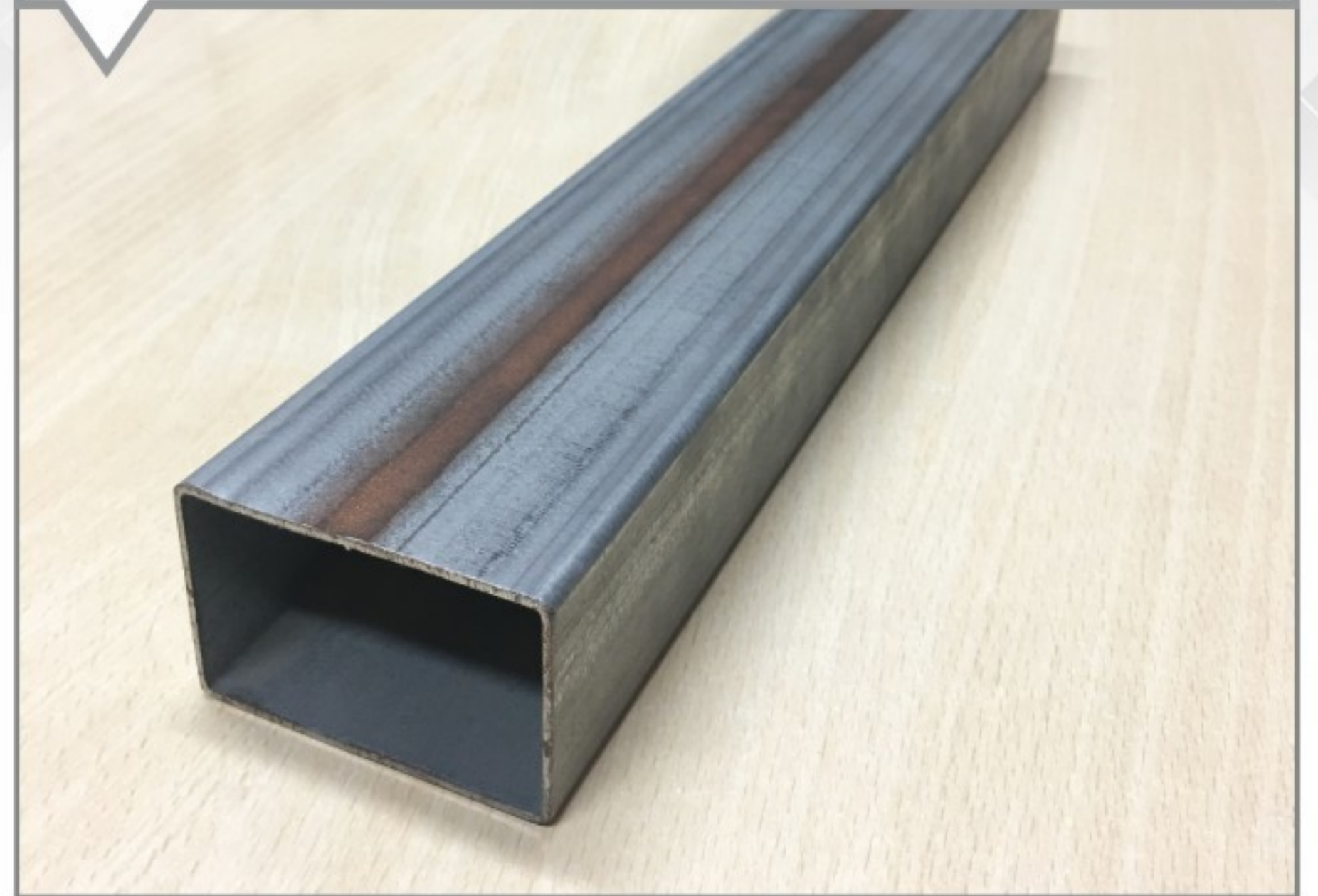


The usage of high strength steel has gained importance among the bus body builders in India as its a step forward towards improved safety and light-weighting of structure (vehicle efficiency). We regularly cater structural tube with high strength to support the research and development of the OEMs.

Manufacturing process improvement also means complicating the shape of the structural tube to simplify the process such as welding of two or more standard round, square and/or rectangular tubes to achieve a desired shape for stacking other components and sub-assemblies on to it. We believe in accepting challenges of achieving new shapes that would enable minimise the manufacturing process.

"Material saved is money earned" - Customised ready to assemble components that would avoid useless left-out material due to cutting structural tubes to a desired length is a benefit that cannot be ignored. Such customised ready to assemble components has proved improvement in takt time on the shop floor while completing the structure of the bus body.

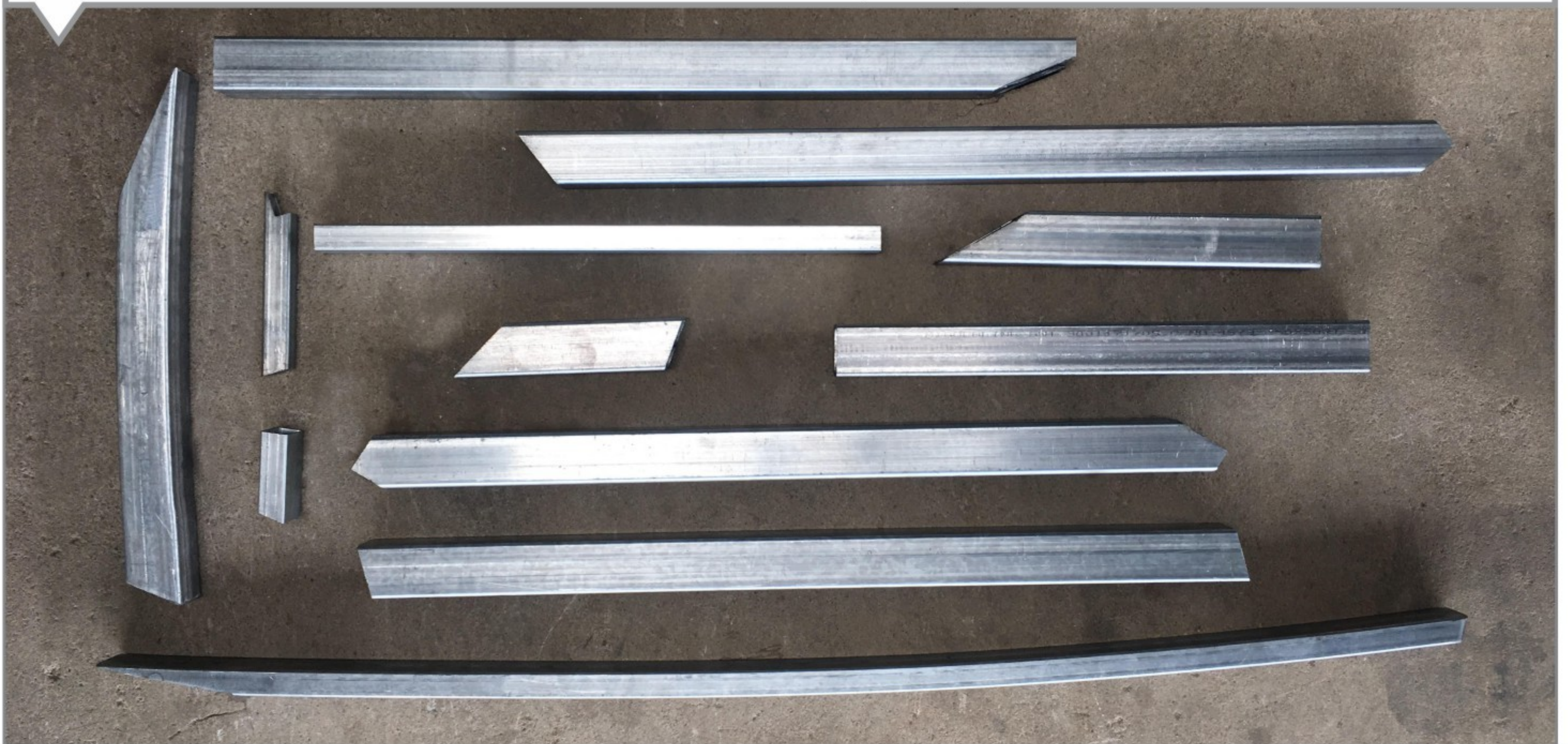
## HIGH TENSILE TUBE



## CUSTOMISED SHAPE TUBES



## COMPLETE KNOCK DOWN (CKD) COMPONENTS






### **VALUE ENGINEERING:**

Several tubular components in the bus body structure needs further processing to meet the shape and style for passenger safety and comforts. The structural sub-assemblies and customised components are part of extended services we have established over the past few years with the demand and support from leading bus building brands in India and abroad.

### **We offer**

- Simple cut-to-length tubes to complex end cuts.
- Tube bending: Roof sticks, Under guards, complete structural hoops as a single piece, grab and guard rails, hatrack arms, arm rest, etc
- Welding: Driver & Passenger door structure, sub-assemblies, side structures etc.
- Finishing: Powder coating and Chrome plating.



8m to 14m single piece long tube  
bent to achieve 5 to 8 radius  
to achieve the  
customised shape requirements.



## SUB ASSEMBLIES



**COMPLETE SIDE STRUCTURE**



**DOOR  
STRUCTURE**

## CUSTOMISED COMPONENTS



**HATRACK ARM**



**DOOR GRAB RAIL**



**ARM REST**

## CUSTOMISED GUARD & GRAB RAILS



**DOOR GUARD RAILS**



**LUGGAGE GUARD RAILS**



## Major industries we work with



Construction  
Equipments



Pre-Engineered  
Building



Textile  
Machinery



Commercial  
Vehicle



Furniture



Retail  
Racking



Electric Vehicle



Agricultural  
Greenhouse



### Mfab Tech Private Limited

No. 279, 280, 282 & 283, Sub layout Kachanayakanahally,  
Phase 1, Bommsandra, Bangalore 560 105

Land line : 97418 31003 Mob: 9686822005 Email: info@mfabtech.com

[www.mfabtech.com](http://www.mfabtech.com)